

TECHNICAL MANUAL

ORGANIZATIONAL MAINTENANCE REPAIR PARTS AND SPECIAL TOOLS LISTS

FOR

CENTRAL OFFICE TELEPHONE AUTOMATIC

AN/TTC-41(V)1 (NSN 5805-01-028-8393),

AN/TTC-41(V)2 (NSN 5805-01-028-8394),

AN/TTC-41(V)3 (NSN 5805-01-028-8392),

AND

AN/TTC-41(V)4 (NSN 5805-01-044-8869)

HEADQUARTERS, DEPARTMENT OF THE ARMY

JULY 1979

TECHNICAL MANUAL }
 No. 11-5805-693-20P }

HEADQUARTERS
 DEPARTMENT OF THE ARMY
 WASHINGTON, DC, 11 July 1979

ORGANIZATIONAL MAINTENANCE REPAIR PARTS AND SPECIAL TOOLS LISTS

FOR

CENTRAL OFFICE TELEPHONE AUTOMATIC

AN/TTC-41 (V) 1 (NSN 5805-01-028-8393),

AN/TTC-41 (V)2 (NSN 5805-01-028-8394),

AN/TTC-41 (V)3 (NSN 5805-01-028-8392),

AND

AN/TTC-41 (V)4 (NSN 5805-01-044-8869)

Current as of 12 January 1979

REPORTING OF ERRORS

You can improve this manual by recommending improvements using DA Form 2028-2 located in the back of the manual. Simply tear out the self-addressed form, fill it out as shown on the sample, fold it where shown, and drop it in the mail.

If there are no blank DA Form 2028-2 in the back of your manual, use the standard DA Form 2028 (Recommended Changes to Publications and Blank Forms) and forward to the Commander, US Army Communications and Electronics Materiel Readiness Command, ATTN: DRSEL-ME-MQ, Fort Monmouth, New Jersey 07703.

In either case a reply will be furnished direct to you.

Table of Contents

		Page	Illus Figure
SECTION I.	Introduction	1	
	II. Repair parts list.....	5	
Group	00 Central Office Telephone Automatic AN/TTC-41(V)1,2,3,4	5	1
	01 Shelter, Electrical Equipment S-561/TTC-41(V)	13	2
	S-561/TTC-41(V), AC Lamp Assembly.....	15	3
	S-561/TTC-41(V), DC Lamp Assembly.....	17	4
	S-561/TTC-41(V), fluorescent Lamp Assembly.....	19	5
	S-561/TTC-41(V), Battery Exhaust Alarm Assembly	21	6
	S-561/TTC-41(V), Battery Box, Rear View	23	7
	S-561/TTC-41(V), Cable Assembly	25	8
	S-561/TTC-41(V), Cable Assembly	27	9
	S-561/TTC-41(V), Cable Assemblies.....	29	10
	S-561/TTC-41(V), Patch Cords	31	11
	0101 Exhaust Blower Assembly (No parts authorized)		
	0102 Power Cable (100 Feet) CX-7453A/U (No parts authorized)		
	0103 Power Cable Stub (15 Feet) CX-7705A/U (No parts authorized)		
	0104 Fire Extinguisher (No parts authorized)		
	0105 Air Conditioner (See TM 5-4120-273-15 for parts)		

0106	Ladder (No parts authorized)		
0107	Heater (No parts authorized)		
02	Central Office, Telephone, Automatic AN/TTC-41(V)5,6,7 (Reserved for Trailer Version)		
03	Switchboard, Automatic Telephone SB-3614/TT (See TM 11-5805-695-20P for parts)		
04	Battery, Storage BB-501/U (See TM 11-6140-203-20P-3 for parts)		
	or		
	Battery, Storage BB-297/U (No parts authorized)		
05	Intercommunication Station LS-147F/FI (See TM 11-5830-256-13&P for parts)		
06	Telephone Set TA-938/G (No parts authorized)		
07	Telephone Set TA-312/PT (See TM 11-5805-201-20P for parts)		
18	Telephone Set TA-838/TT (No parts authorized)		
09	Power Supply PP-6224/U (See TM 11-6130-266-15 for parts)		
10	Headset-Microphone H-182 (See TM 11 -5965-283-15 for parts)		
11	Distribution Box J-1077/U (See TM 11-6110-201-12P for parts)		
12	Power Distribution Box	33	12
13	Signal Entrance Box		
14	Patch Panel		
15	Headset Switch Box	35	13
SECTION III.	Special Tools List (Not applicable)		
IV.	National Stock Number and Part Number Index	36	

SECTION I
INTRODUCTION

1. Scope

This manual lists spares and repair parts; special tools; special test, measurement, and diagnostic equipment (TMDE), and other special support equipment required for performance of organizational maintenance of the AN/TTC-41(V)1,2,3, and 4. It authorizes the requisitioning and issue of spares and repair parts as indicated by the source and maintenance codes.

2. General

This Repair Parts and Special Tools List is divided into the following sections:

a. Section II. Repair Parts List. A list of spares and repair parts authorized for use in the performance of maintenance. The list also includes parts which must be removed for replacement of the authorized parts. Parts lists are composed of functional groups in numeric sequence, with the parts in each group listed in figure and item number sequence.

b. Section III. Special Tools List. Not applicable

c. Section IV. National Stock Number and Part Number Index. A list, in National item identification number (NIIN) sequence, of all National stock numbers (NSN) appearing in the listings, followed by a list, in alphameric sequence, of all part numbers appearing in the listings. National stock numbers and part numbers are cross-referenced to each illustration figure and item number appearance.

3. Explanation of Columns

a. Illustration. This column is divided as follows:

(1) *Figure number.* Indicates the figure number of the illustration on which the item is shown.

(2) *Item number.* The number used to identify item called out in the illustration.

b. Source, Maintenance, and Recoverability (SMR) Codes.

(1) *Source code.* Source codes indicate the manner of acquiring support items for maintenance, repair, or overhaul of end items. Source codes are entered in the first and second positions of the Uniform SMR Code format as follows:

<i>Code</i>	<i>Definition</i>
PA-	Item procured and stocked for anticipated or known usage.
PB-	Item procured and stocked for insurance purpose because essentiality dictates that a minimum quantity be available in the supply system.
PD-	Support item, excluding support equipment, procured for initial issue or outfitting and stocked only for subsequent or additional initial issues or outfittings. Not subject to automatic replenishment.
XD-	A support item that is not stocked. When required, item will be procured through normal supply channels.

NOTE

Cannibalization or salvage may be used as a source of supply for any items source coded above except those coded XA and aircraft support items as restricted by AR 700-42.

(2) *Maintenance code.* Maintenance codes are assigned to indicate the levels of maintenance authorized to USE and REPAIR support items. The maintenance codes are entered in the third and fourth positions of the Uniform SMR Code format as follows:

(a) The maintenance code entered in the third position will indicate the lowest maintenance level authorized to remove, replace, and use the support item. The maintenance code' entered in the third position will indicate one of the following levels of maintenance:

<i>Code</i>	<i>Application/Explanation</i>
O-	Support item is removed, replaced, used at the organizational level.

(b) The maintenance code entered in the fourth position indicates whether the item is to be repaired and identifies the lowest maintenance level with the capability to perform complete repair (i.e., all authorized maintenance functions). This position will contain one of the following maintenance codes:

- | <i>Code</i> | <i>Application/Explanation</i> |
|-------------|---|
| F- | The lowest maintenance level capable of complete repair of the support item is the direct support level. |
| H- | The lowest maintenance level capable of complete repair of the support item is the general support level. |
| D- | The lowest maintenance level capable of complete repair of the support item is the depot level. |
| Z- | Nonreparable. No repair is authorized. |

(3) *Recoverability code.* Recoverability codes are assigned to support items to indicate the disposition action on unserviceable items. The recoverability code is entered in the fifth position of the Uniform SMR Code format as follows:

- | <i>Recoverability codes</i> | <i>Definition</i> |
|-----------------------------|---|
| Z- | Nonreparable item. When unserviceable, condemn and dispose at the level indicated in position 3. |
| F- | Reparable item. When uneconomically repairable, condemn and dispose at the direct support level. |
| D- | Reparable item. When beyond lower level repair capability, return to depot. Condemnation and disposal not authorized below depot level. |
| L- | Reparable item. Repair, condemnation, and disposal not authorized below depot/specialized repair activity level. |

c. *National Stock Number.* Indicates the National stock number assigned to the item and will be used for requisitioning purposes.

d. *Part Number.* Indicates the primary number used by the manufacturer (individual, company, firm, corporation, or Government activity), which controls the design and characteristics of the item by means of its engineering drawings, specifications, standards, and inspection requirements to identify an item or range of items.

NOTE

When a stock numbered item is requisitioned, the repair part received may have a different part number than the part being replaced.

e. *Federal Supply Code for Manufacturer (FSCM).* The (FSCM) is a 5-digit numeric code listed in SB 708-42 which is used to identify the manufacturer, distributor, or Government agency, etc.

f. *Description.* Indicates the Federal item name and, if required, a minimum description to identify the item.

g. *Unit of Measure (U/M).* Indicates the standard of the basic quantity of the listed item as used in performing the actual maintenance function. This measure is expressed by a two-character alphabetical abbreviation (e.g., ea. in, pr, etc.). When the unit of measure differs from the unit of issue, the lowest unit of issue that will satisfy the required units of measure will be requisitioned.

h. *Quantity Incorporated in Unit.* Indicates the quantity of the item used in the breakout shown on the illustration figure, which is prepared for a functional group, subfunctional group, or an assembly.

4. Special Information

a. Usable on codes are shown in the description column. Uncoded items are applicable to all models. Identification of the usable on codes used in this publication are:

<i>Code</i>	<i>Used on</i>
DAW	AN/TTC-41(V)1
DAX	AN/TTC-41(V)2
DAY	AN/TTC-41(V)3
DJP	AN/TTC-41(V)4

b. Detailed assembly instructions for items source coded to be assembled are found in TM 11-5805-693-12. Assembly components are listed immediately following the item to be assembled.

c. The following publications pertain to the AN/TTC-41(V)1, 2, 3, and 4 and their components:

- TM 5-4120-273-15, Air Conditioning Units, Electric Motor Driven: 6000 BTU/HR, Vertical Compact, 115 Volt, Single Phase, 50/60 Cycle (Therm-Air Manufacturing Co., MDL CV-6-15-60); 6000 BTU/HR Vertical Compact, 208 Volt, Three Phase, 400 Cycle (Therm-Air Manufacturing Co. MDL CV-6-3-08-400)
- TM 5-4120-273-20P, Air Conditioning Units, Electric Motor Driven: 6000 BTU/HR, Vertical Compact, 115 Volt, Single Phase, 50/60 Cycle (Therm-Air Manufacturing Co., MDL CV-6-15-60); 6000 BTU/HR Vertical Compact, 208 Volt, Three Phase, 400 Cycle (Therm-Air Manufacturing Co. MDL CV-6-3-08-400)
- TM 11-5805-201-12, Telephone Set TA-312/PT
- TM 11-5805-201-20P, Telephone Set TA-312/PT
- TM 11-5805-693-12, Central Office Telephone, Automatic AN/TTC-41(V)1, 2, 3, and 4
- TM 11-5805-695-12, Switchboard Telephone SB-3614(V)/TT
- TM 11-5805-695-20P, Switchboard Telephone SB-3614(V)/TT
- TM 11-5830-256-13&P, Intercommunication Station LS-147F/FI
- TM 11-5965-283-15, Headset-Microphone H-182/PT

5. How to Locate Repair Parts

a. When National stock number or part number is unknown.

(1) *First.* Using the table of contents, determine the functional group within which the item belongs.

This is necessary since illustrations are prepared for functional groups and listings are divided into the same groups.

(2) *Second.* Find the illustration covering the functional group to which the item belongs.

(3) *Third.* Identify the item on the illustration and note the illustration figure and item number of the item.

(4) *Fourth.* Using the Repair Parts Listing, find the figure and item number noted on the illustration.

b. When National stock number or part number is known.

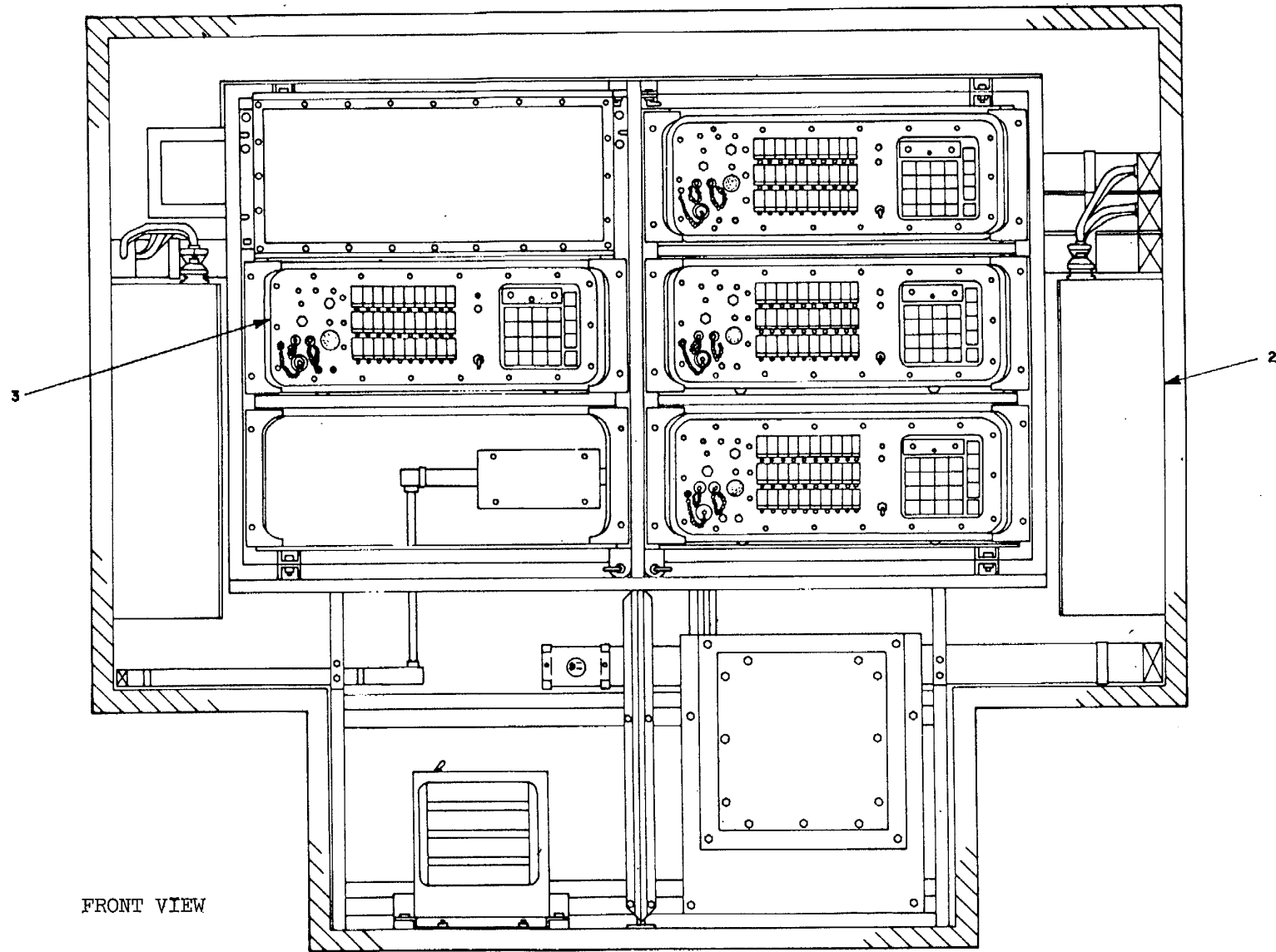
(1) *First.* Using the Index of National Stock Numbers and Part Numbers, find the pertinent National stock number or part number. This index is in NIIN sequence followed by a list of part numbers in alphameric sequence, cross-referenced to the illustration figure number and item number.

(2) *Second.* After finding the figure and item number, locate the figure and item number in the repair parts list.

6. Abbreviations

Not applicable.

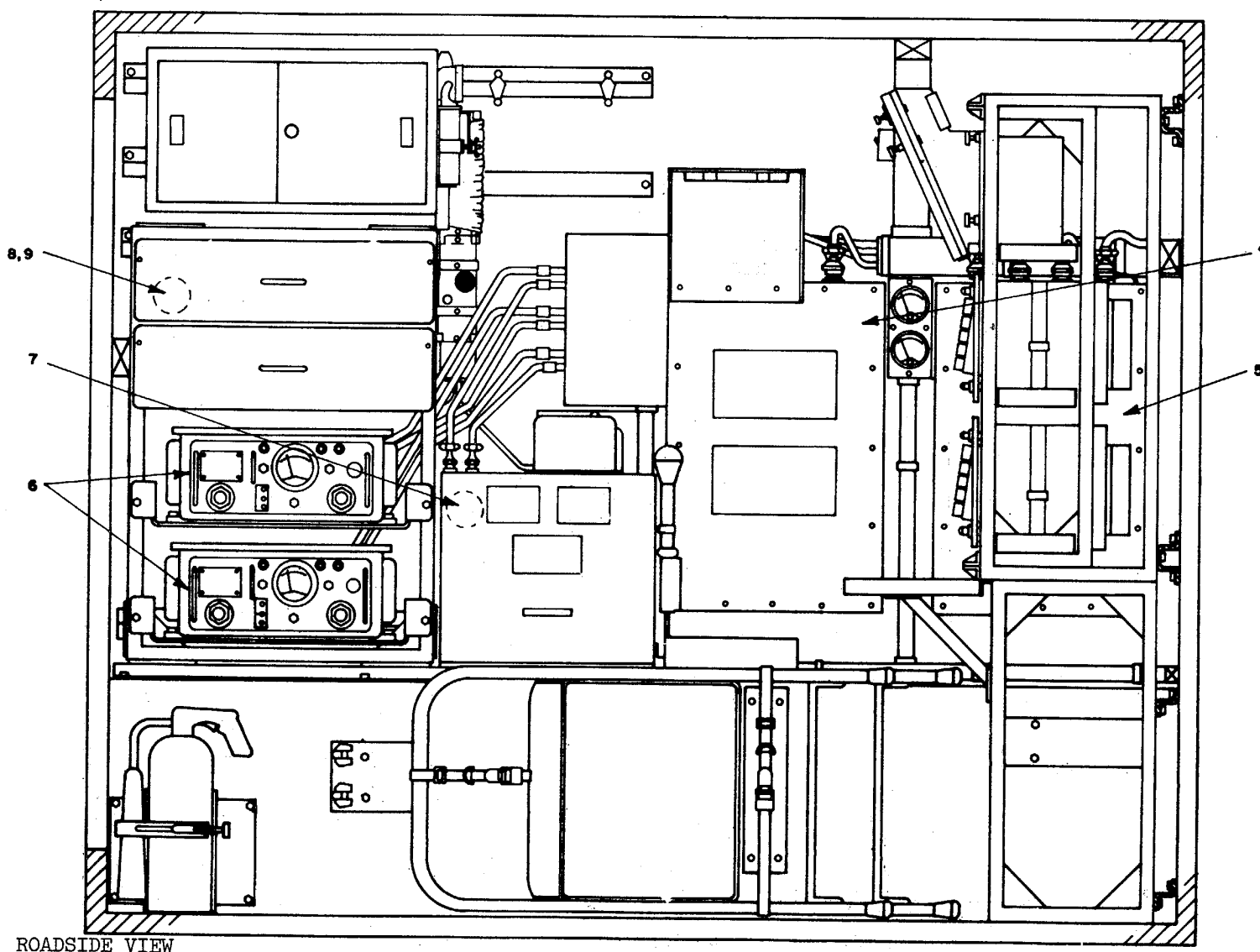
(Next printed page is 4)



FRONT VIEW

ELOXC001

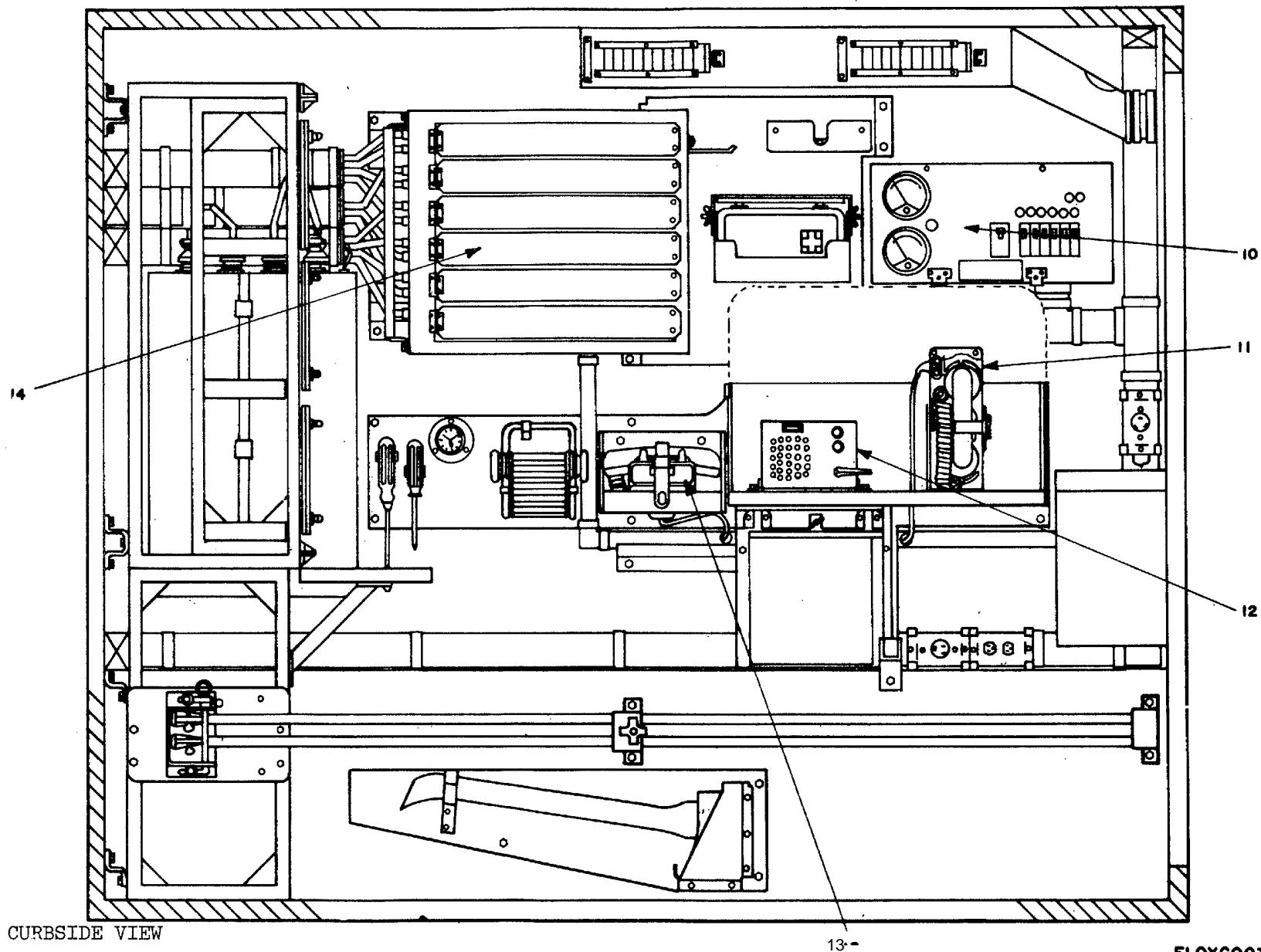
Figure 1. Central Office Telephone Automatic AN/TTC-41(V) 1, 2, 3, 4 (Sheet 1 of 3)



ROADSIDE VIEW

ELOXC002

Figure 1. Central Office Telephone Automatic AN/TTC-41(V) 1, 2, 3, 4 (Sheet 2 of 3)



CURBSIDE VIEW

13-

ELOXC003

Figure 1. Central Office Telephone Automatic AN/TTC-41(V) 1, 2, 3, 4 (sheet 3 of 3)

SECTION II

TM 11-5805-693-20P

(1) ILLUSTRATION		(2)	(3)	(4)	(5)	(6)	(7)	(8)
(a) FIG NO.	(b) ITEM NO.	SMR CODE	NATIONAL STOCK NUMBER	PART NUMBER	FSCM	DESCRIPTION <i>USABLE ON CODE</i>	U/M	QTY INC IN UNIT
						GROUP 00 CENTRAL OFFICE TELEPHONE AUTOMATIC AN/TCC-41(V)1,2,3,4		
1	3	PDOFD	5805-01-032-1694	SB-3614(V)/TT	80058	SWITCHBOARD MODEL DAX HAS A QUANTITY OF 2 . MODEL DAY HAS A QUANTITY OF 3 MODEL DJP HAS A QUANTITY OF 4.....	EA	1
1	6	PDOHD	6130-00-133-5879	PP6224/U	80058	POWER SUPPLY MODEL DJP HAS A QUANTITY OF 2	EA	1
1	7	PAODL	6140-00-134-0850	BB501/U	80058	BATTERY ASSEMBLY, MODEL DJP HAS A.....	EA	1
1	7	PADDL	6140-00-134-0850	BB501/U	80058	BATTERY ASSEMBLY.....DJP.	EA	2
1	8	PAOZZ		H-182/PT	80058	HEADSET-MICRUPHONE	EA	1
1	11	PDOFD	5805-00-543-0012	TA312/PT	80058	TELEPHONE SET	EA	1
1	12	PDOFD	5830-01-008-3126	LS-147F/F1	80058	INTERCOMMUNICATION.....	EA	1
1	13	PDOFD	5805-00-134-2599	TA938/G	80058	TELEPHONE SET	EA	1

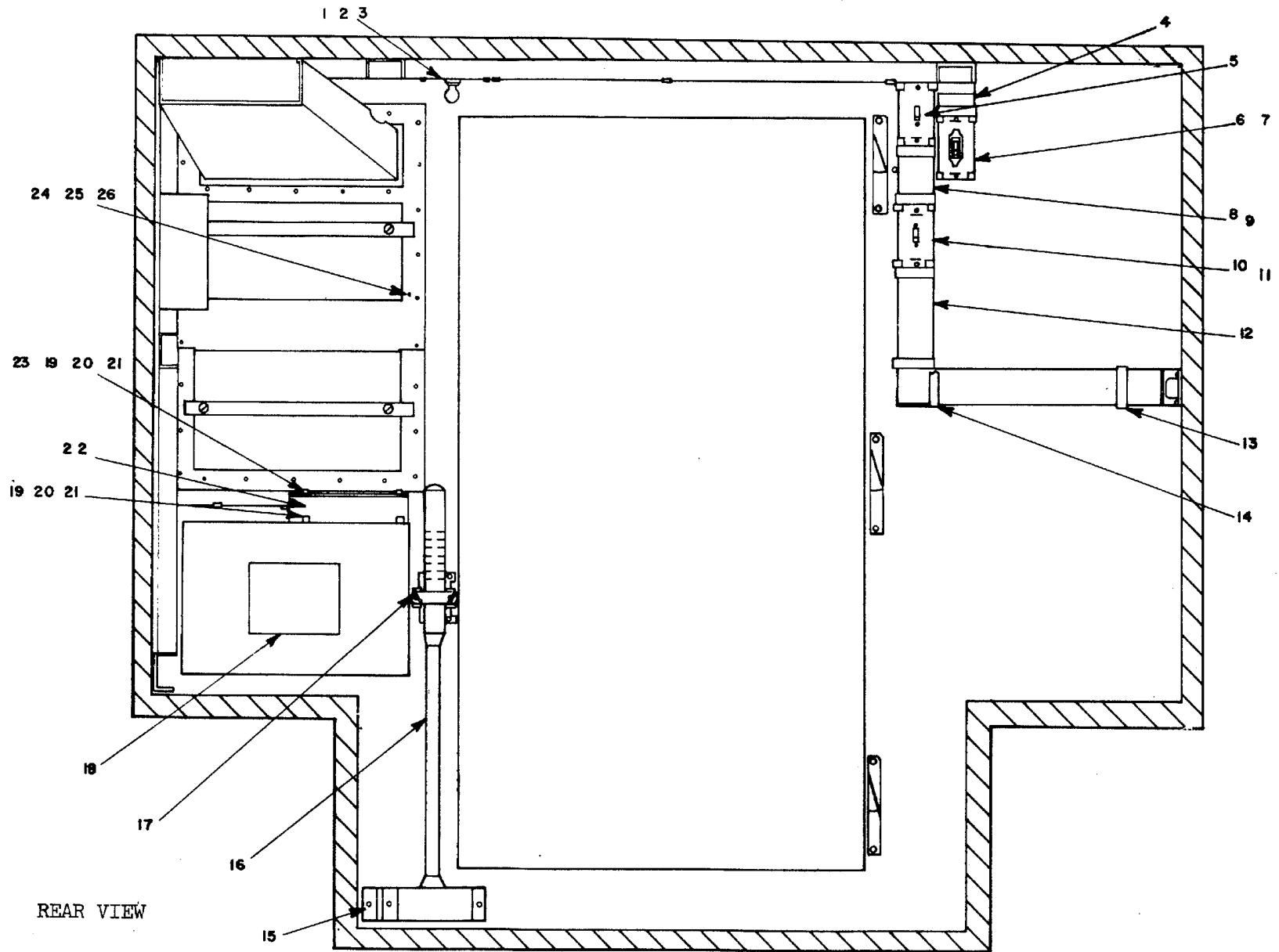


Figure 2. Shelter Electrical Equipment S-561/TTC-41(V) (Sheet 1 of 7)

ELOXC004

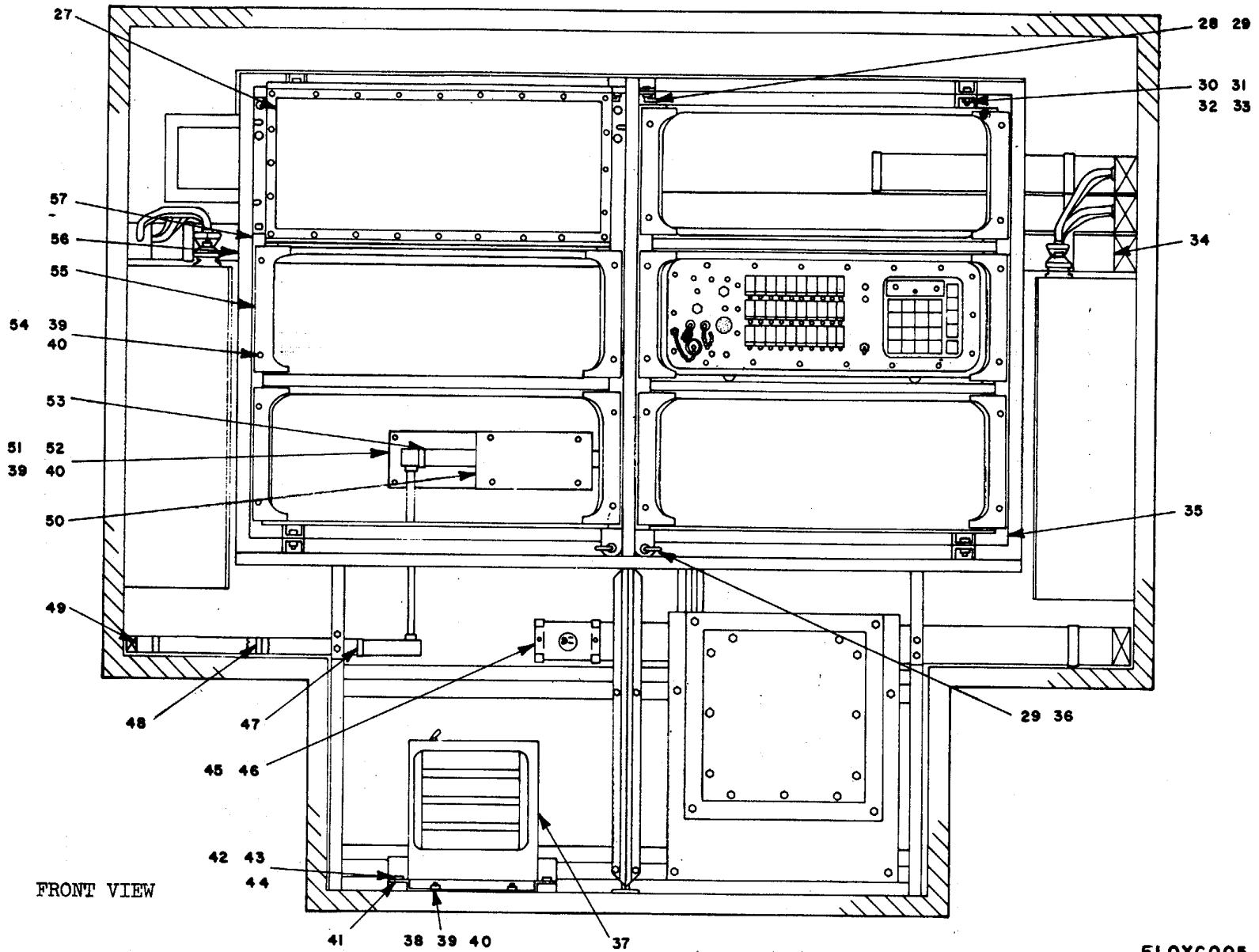


Figure 2. Shelter Electrical Equipment S-561/TTC-41(V) (Sheet 2 of 7)

ELOXC005

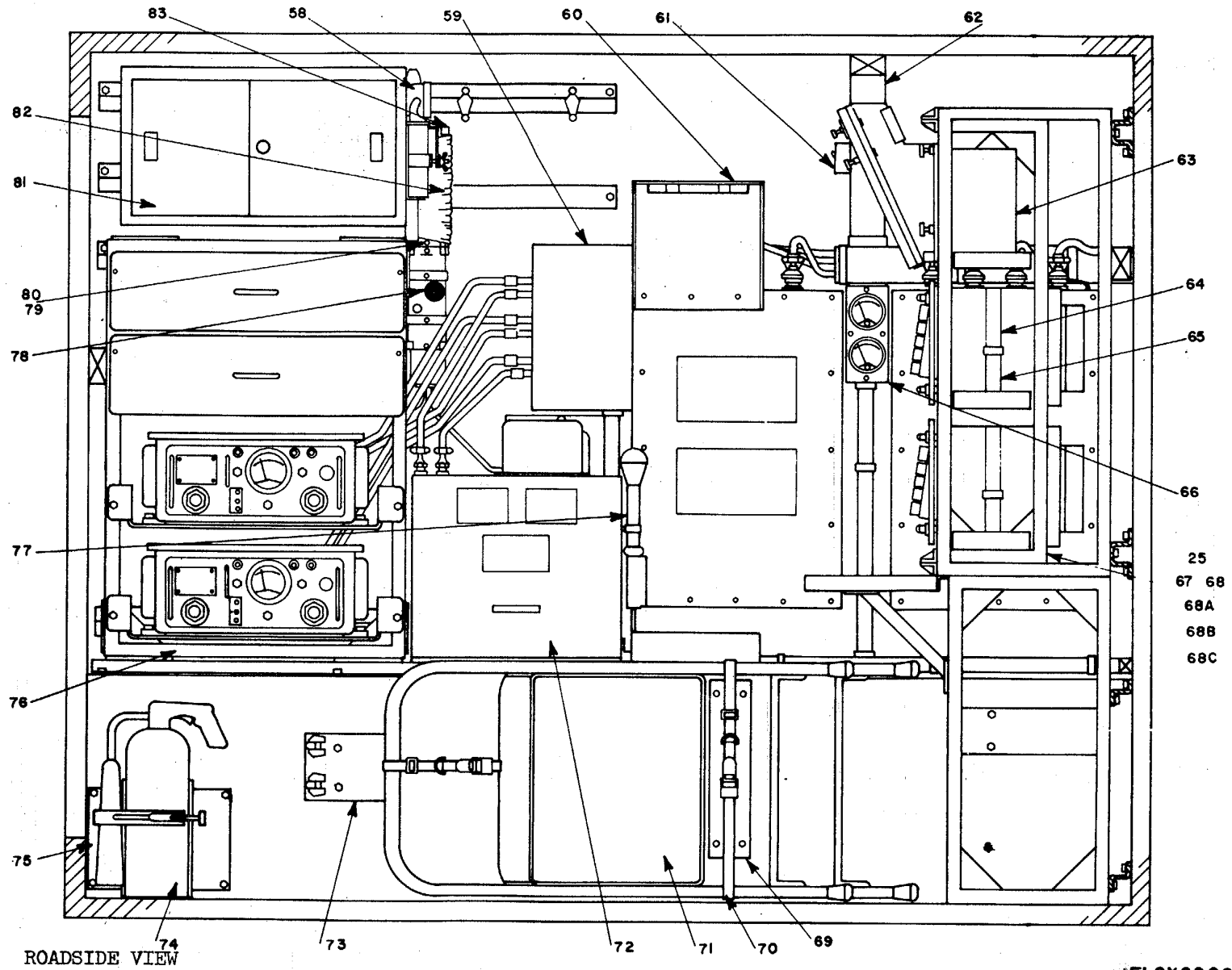


Figure 2. Shelter Electrical Equipment S-561/TTC-41(V) (Sheet 3 of 7)

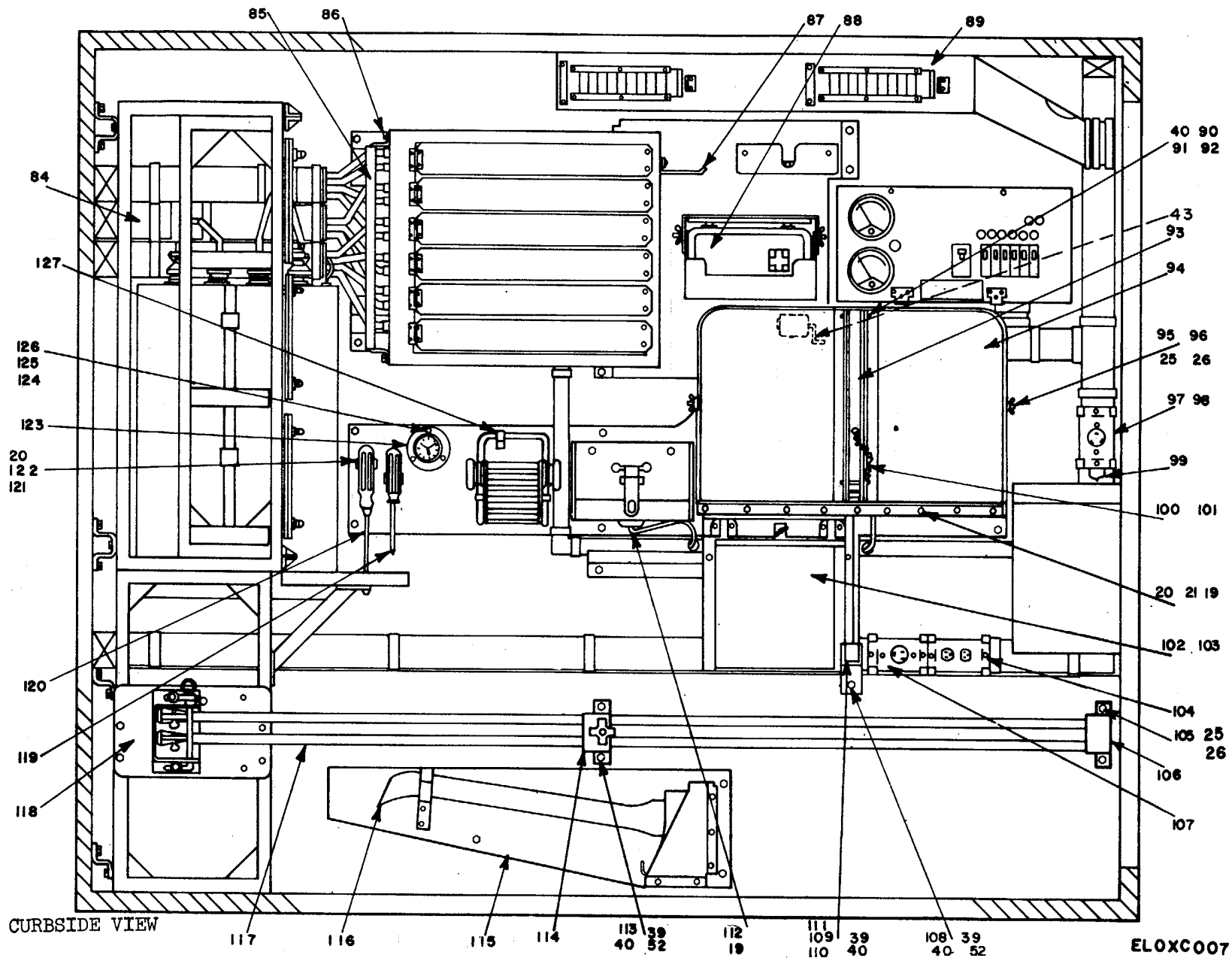
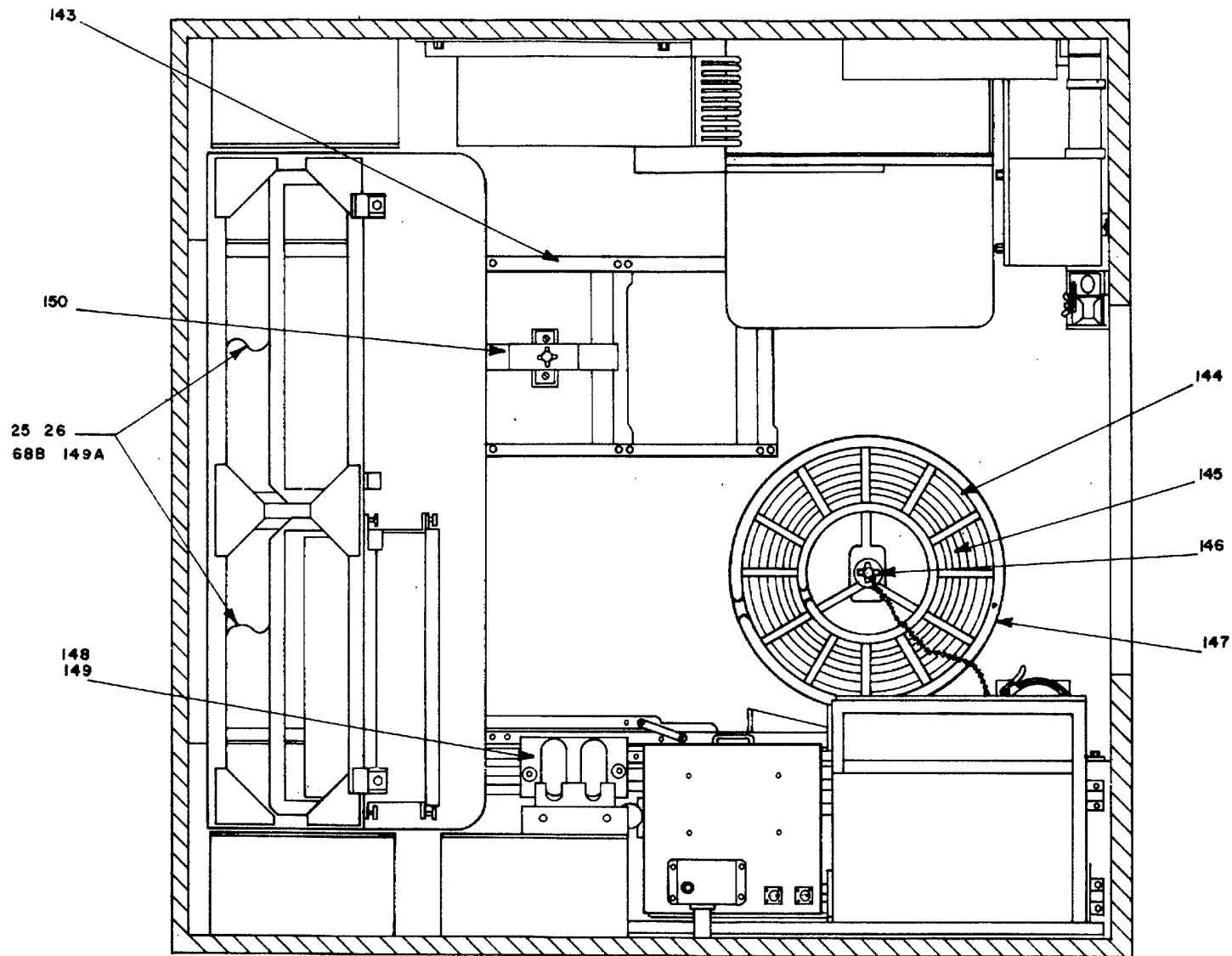


Figure 2. Shelter Electrical Equipment S-561/TTC-41(V) (Sheet 4 of 7)



FLOOR VIEW

ELOXCO06

Figure 2. Shelter Electrical Equipment S-561/TTC-41(V) (Sheet 5 of 7)

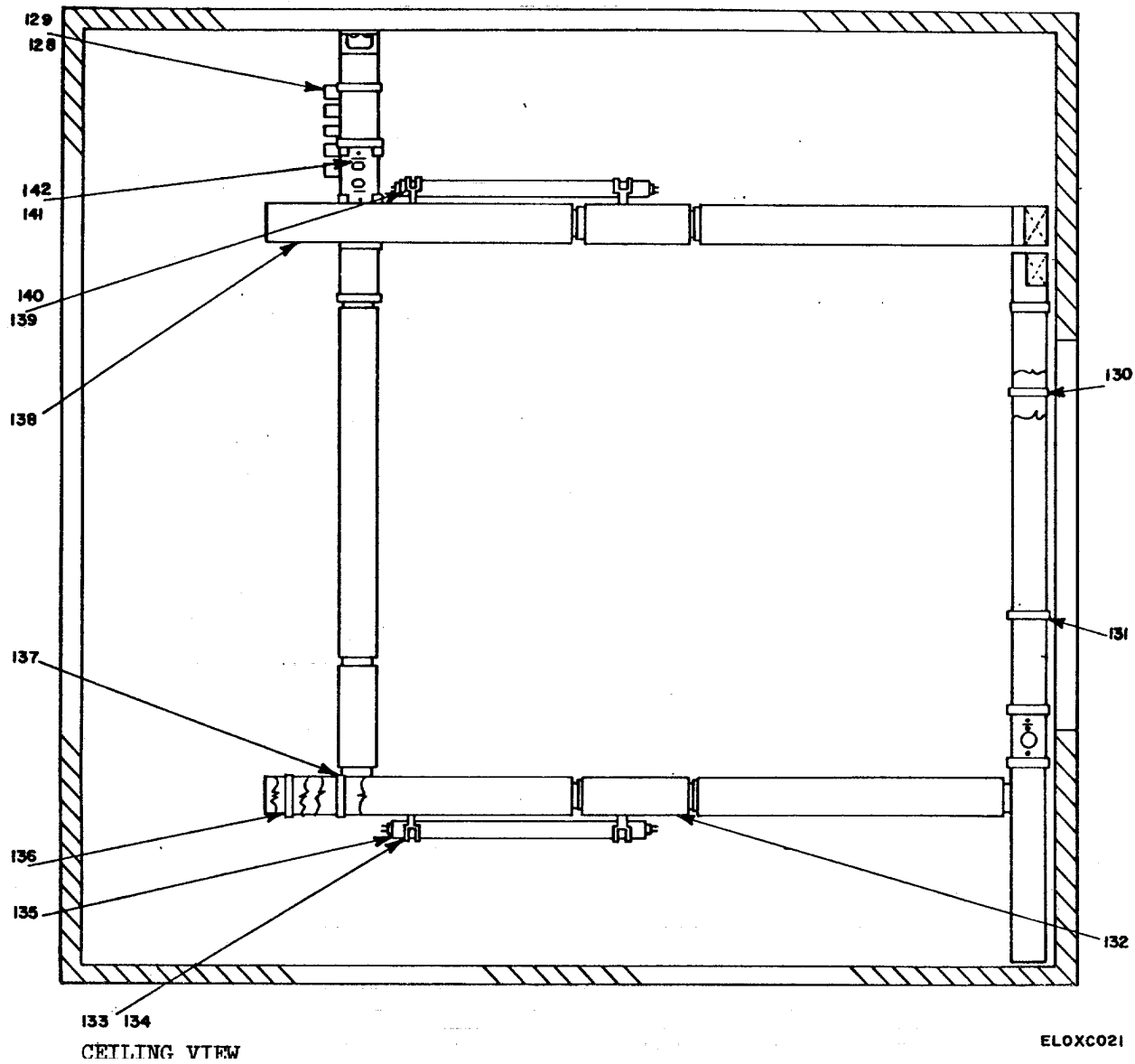


Figure 2. Shelter Electrical Equipment S-561/TTC-41(V) (Sheet 6 of 7)

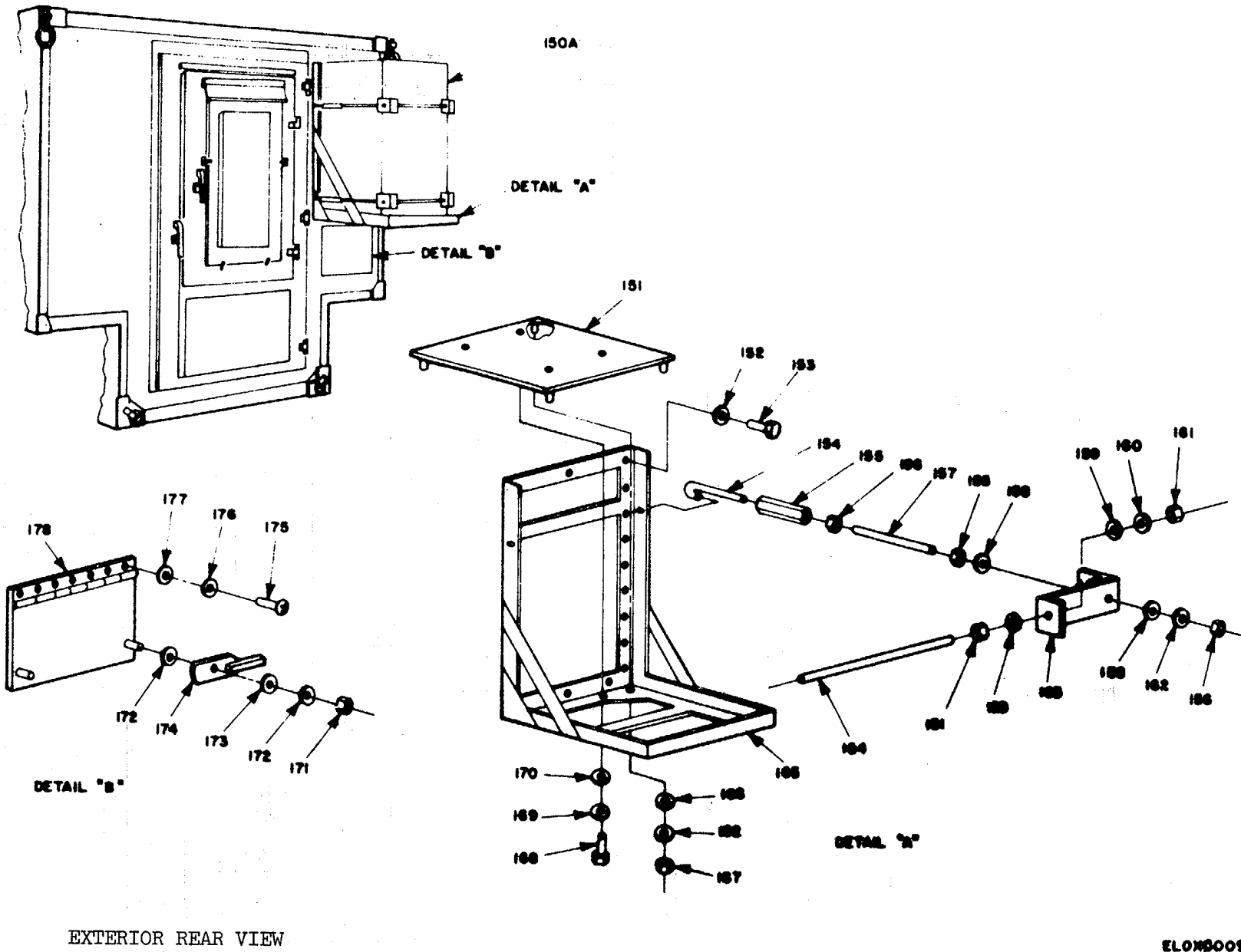


Figure 2. Shelter Electrical Equipment S-561/TTC-41(V) (Sheet 7 of 7)

SECTION II

TM 11-5805-693-20P

(1) ILLUSTRATION		(2)	(3)	(4)	(5)	(6)	(7)	(8)
(a) FIG NO.	(b) ITEM NO.	SMR CODE	NATIONAL STOCK NUMBER	PART NUMBER	FSCM	DESCRIPTION <i>USABLE ON CODE</i>	U/M	QTY INC IN UNIT
						GROUP 01 SHELTER ELECTRICAL EQUIPMENT S-561/TTC-41(V)		
2	3	PAOZZ	6240-00-635-9753	M15098/3-002	81349	LAMP,GLOW	EA	1
2	16	PDOZZ	5120-00-900-6096	SCC539505	80063	HAMMER,HAND	EA	1
2	37	PDOZZ		SC-B-539644	80063	HEATER ASSEMBLY	EA	1
2	43	PAOZZ	7520-00-162-6178	SCC539503	80063	SHARPENER,PENCIL	EA	1
2	58	PAOZZ	6230-00-729-9614	SCC539491	80063	FLASHLIGHT	EA	1
2	71	PDOZZ	7105-00-269-8463	SCD539471	80063	CHAIR,FOLDING	EA	2
2	74	PDOZZ	4210-00-270-4512	SCD539482	80063	RE TYPE 1 SIZE	EA	1
2	82	PAOZZ	7920-00-342-4521	SCC539469	80063	BRUSH, DUSTING, BE.....	EA	1
2	88	PDOZZ		SCD539483	80063	FIRST AID KIT.....	EA	1
2	102	PAOZZ	7520-00-159-4863	SCD539454	80063	BASKET, WASTEPAPER	EA	1
2	103	XDOZZ		SCC539526	80063	CHAIR CUSHION.....	EA	2
2	116	PDOZZ	5110-00-115-5049	SCC539451	80063	AX,SINGLE BIT.....	EA	1
2	117	PAOZZ	5975-00-224-5260	SC-D-14158	80063	GROUND RODS.....	EA	2
2	119	PAOZZ	5120-00-060-2004	SC-C-539894-3	80063	SCREWDRIVER, CROSS T	EA	1
2	120	PAOZZ	5120-00-222-8852	SC-C-539502-4	80063	SCREWDRIVER, FLAT TI	EA	1
2	123	PDOZZ	6645-00-410-2395	SCC539475	80063	CLOCK, HALL.....	EA	1
2	127	PDOZZ		SC-D-865568	80063	CARD FILE ROTARY.....	EA	1
2	128	PAOZZ	6250-00-194-4794	SCB539504	80063	STARTER, FLUORESCENT.....	EA	5
2	135	PAOZZ	6240-00-152-2996	SCC539495	80063	LAMP,FLUORESCENT.....	EA	2
2	143	PDOZZ	2540-00-846-8483	SC-D-147189	80063	LADDER,VEHICLE BOAR	EA	1
2	144	PDOZZ		SC-D-115721	80063	POWER CABLE STUD.....	EA	1
2	145	PDOZZ		SCDL115724	80063	POWER CABLE IOOFEET	EA	1
2	147	PAOZZ		RC435U	80058	REEL, CABLE	EA	1
2	150A	PDOFD	4120-00-935-1608	CV6-1-15-60	06534	AIR CONDITIONER.....	EA	1

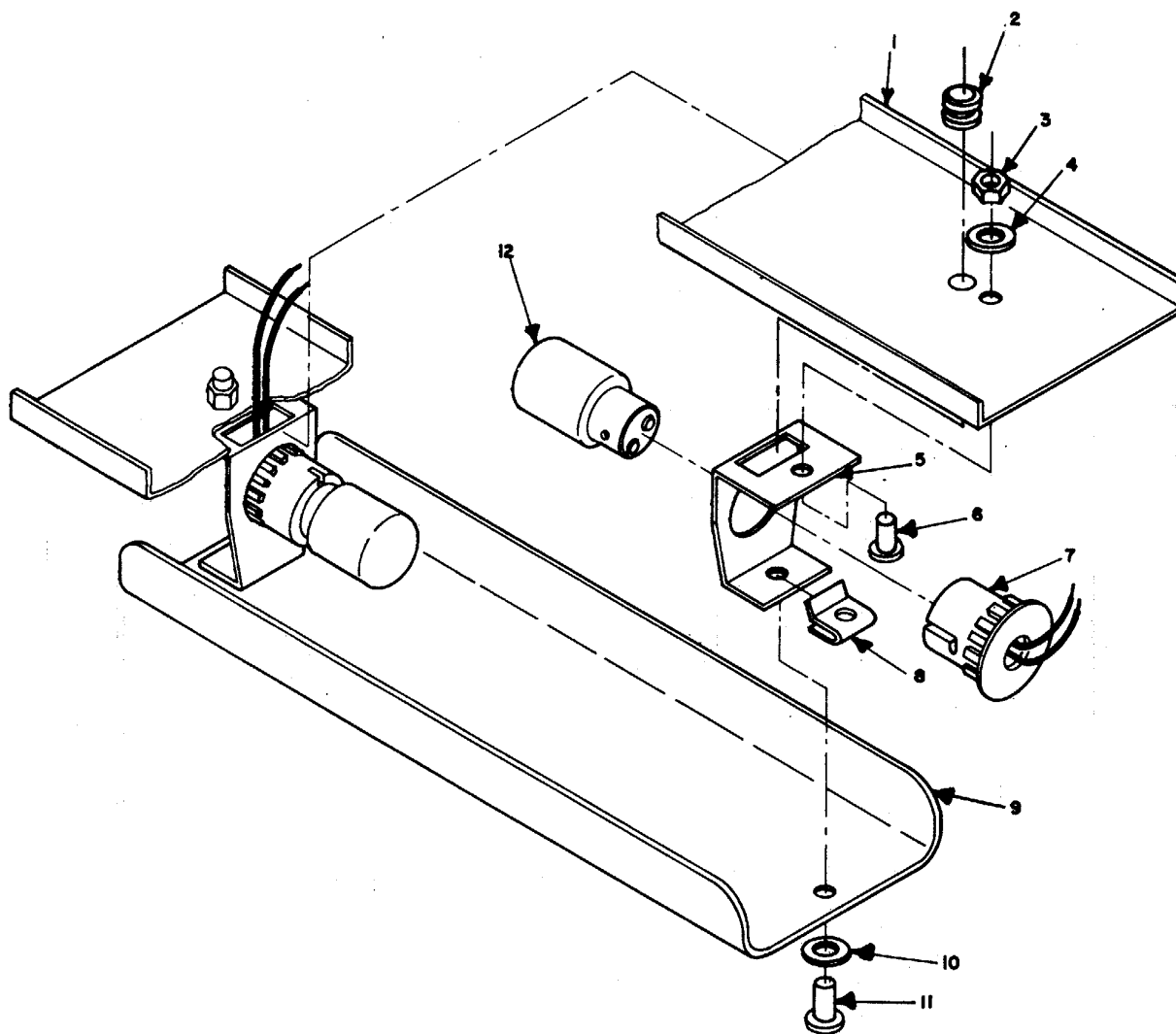


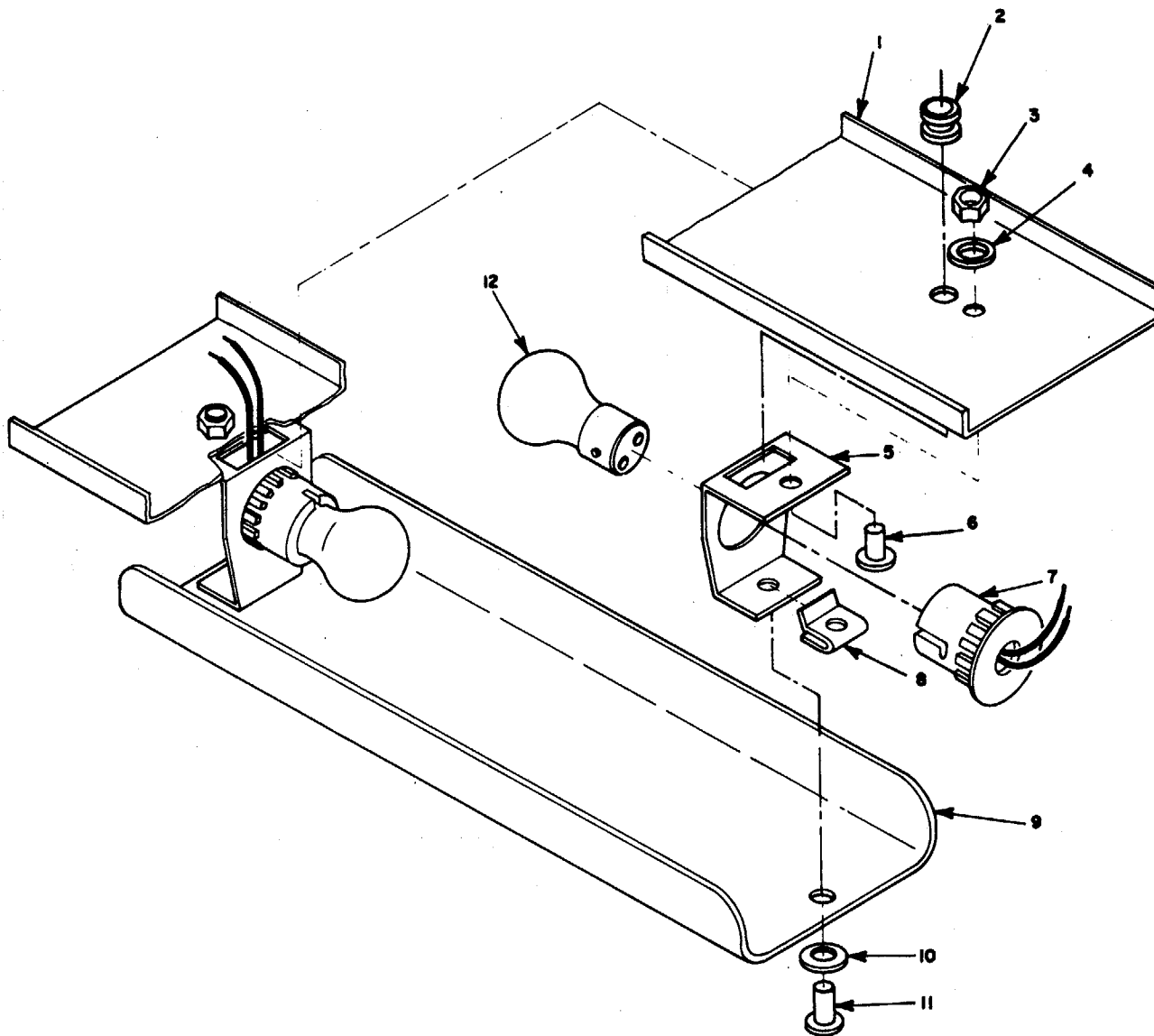
Figure 3. S-561/TTC-41(V), AC Lamp Assembly.

ELOXC010

SECTION II

TM 11-5805-693-20P

(1) ILLUSTRATION		(2)	(3)	(4)	(5)	(6)	(7)	(8)
(a) FIG NO.	(b) ITEM NO.	SMR CODE	NATIONAL STOCK NUMBER	PART NUMBER	FSCM	DESCRIPTION <i>USABLE ON CODE</i>	U/M	QTY INC IN UNIT
3	12	PAOZZ	6240-00-155-8653	MS15548-1	96906	LAMP, INCANDESCENT	EA	4



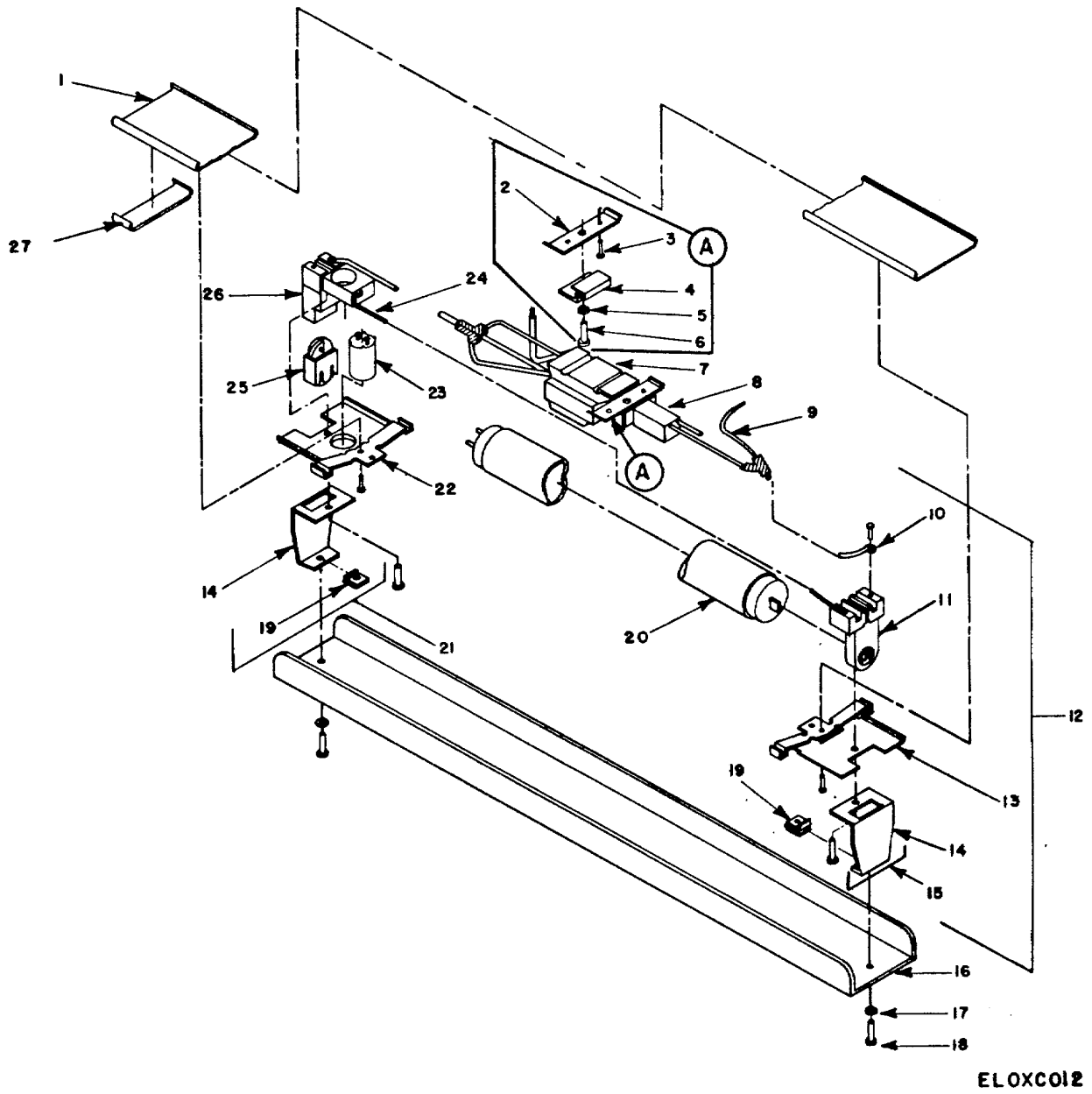
ELOXCOII

Figure 4. S-561/TTC-41(V), DC Lamp Assembly

SECTION II

TM 11-5805-693-20P

(1) ILLUSTRATION		(2)	(3)	(4)	(5)	(6)	(7)	(8)
(a) FIG NO.	(b) ITEM NO.	SMR CODE	NATIONAL STOCK NUMBER	PART NUMBER	FSCM	DESCRIPTION <i>USABLE ON CODE</i>	U/M	QTY INC IN UNIT
4	12	PAOZZ	6240-00-155-8726	MS15584-8	96906	LAMP, INCANDESCENCE.....	EA	2



ELOXC012

Figure 5. S-561/TTC-41 (V), Fluorescent Lamp Assembly.

SECTION II

TM 11-5805-693-20P

(1)		(2)	(3)	(4)	(5)	(6)	(7)	(8)
ILLUSTRATION		SMR CODE	NATIONAL STOCK NUMBER	PART NUMBER	FSCM	DESCRIPTION <i>USABLE ON CODE</i>	U/M	QTY INC IN UNIT
(a) FIG NO.	(b) ITEM NO.							
5	20	PAOZZ	6240-00-152-2996	SCCS39495	80063	LAMP,FLUORESCENT	EA	5
5	23	PAOZZ	6250-00-194-4794	SCB539504	80063	STARTER,FLUORESCENT	EA	5

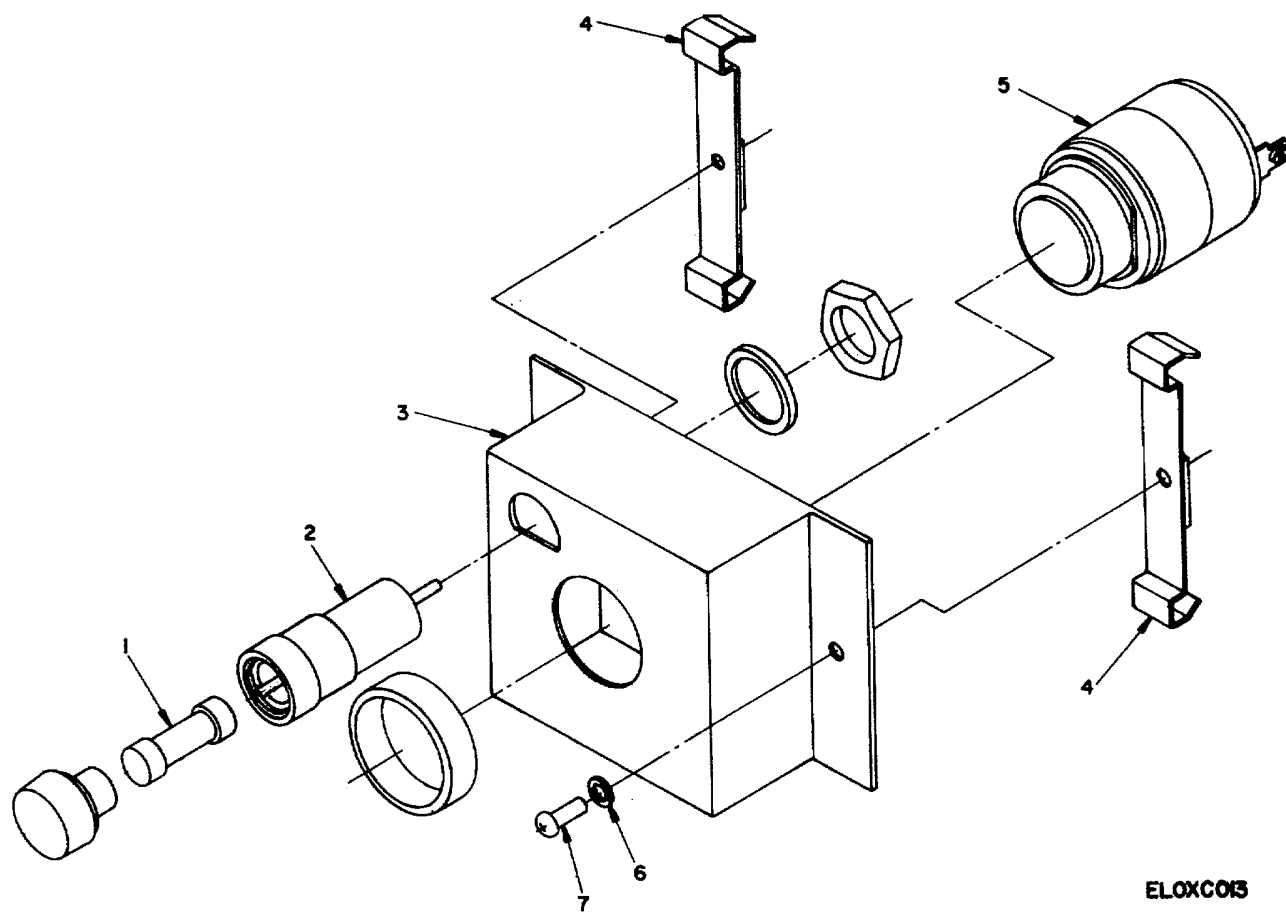


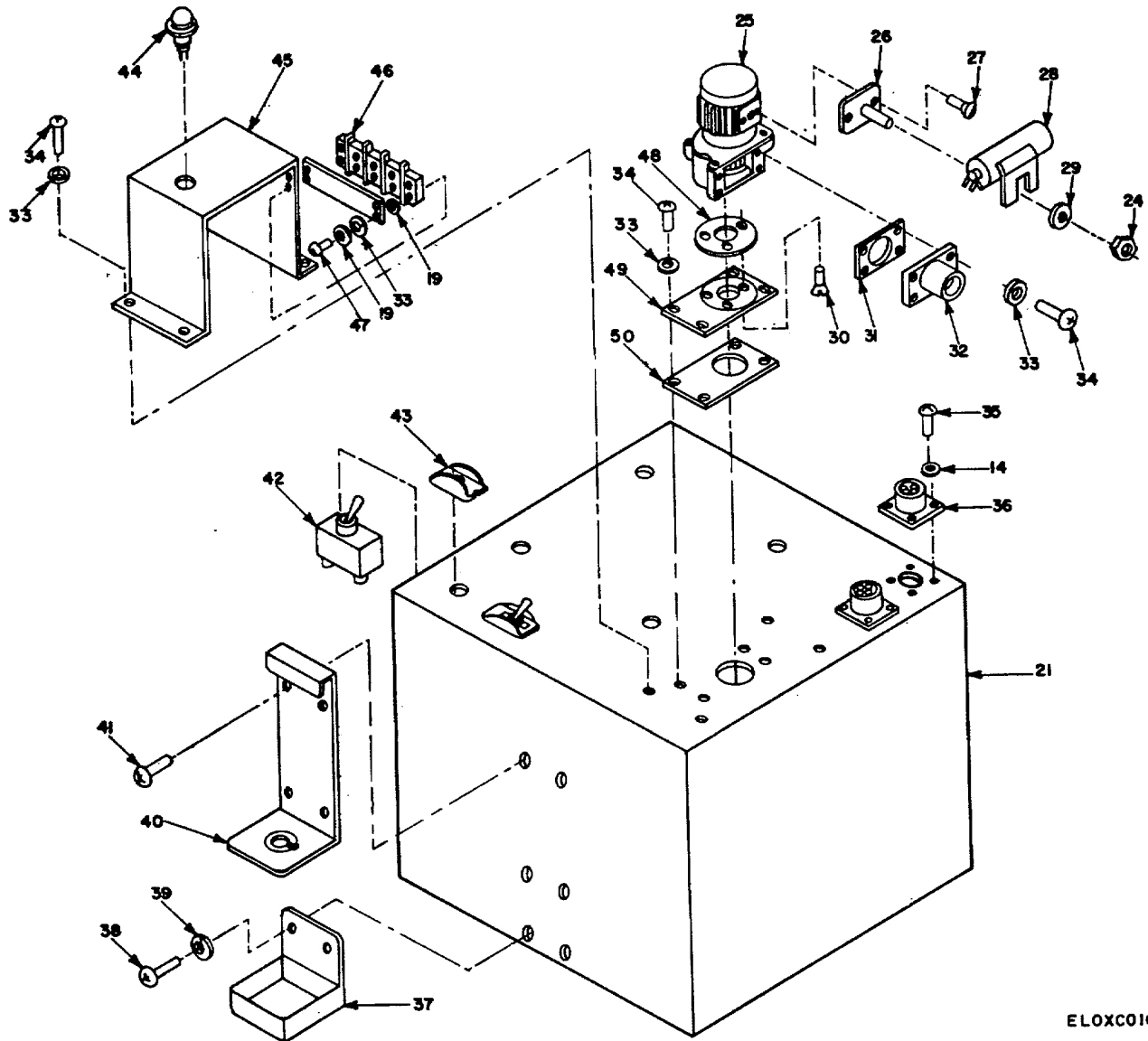
Figure 6. S-561/TTC-41 (V), Battery Exhaust Alarm Assembly.

SECTION II

TM 11-5805-693-20P

(1) ILLUSTRATION		(2)	(3)	(4)	(5)	(6)	(7)	(8)
(a) FIG NO.	(b) ITEM NO.	SMR CODE	NATIONAL STOCK NUMBER	FSCM	PART NUMBER	DESCRIPTION <i>USABLE ON CODE</i>	U/M	QTY INC IN UNIT
	6	1	PAOZZ 5920-00-280-8342	81349	FO2A250V1A	FUSE.CARTRIDGE.....		EA

1



ELOXC016

Figure 7. S-561/TTC-41 (V), Battery Box, Rear View.

SECTION II

TM 11-5805-693-20P

(1)		(2)	(3)	(4)	(5)	(6)	(7)	(8)
ILLUSTRATION		SMR CODE	NATIONAL STOCK NUMBER	PART NUMBER	FSCM	DESCRIPTION <i>USABLE ON CODE</i>	U/M	QTY INC IN UNIT
(a) FIG NO.	(b) ITEM NO.							
7	44	PAOZZ		SC-C-865686	80063	LAMP INCANDESCENT.....	EA	1

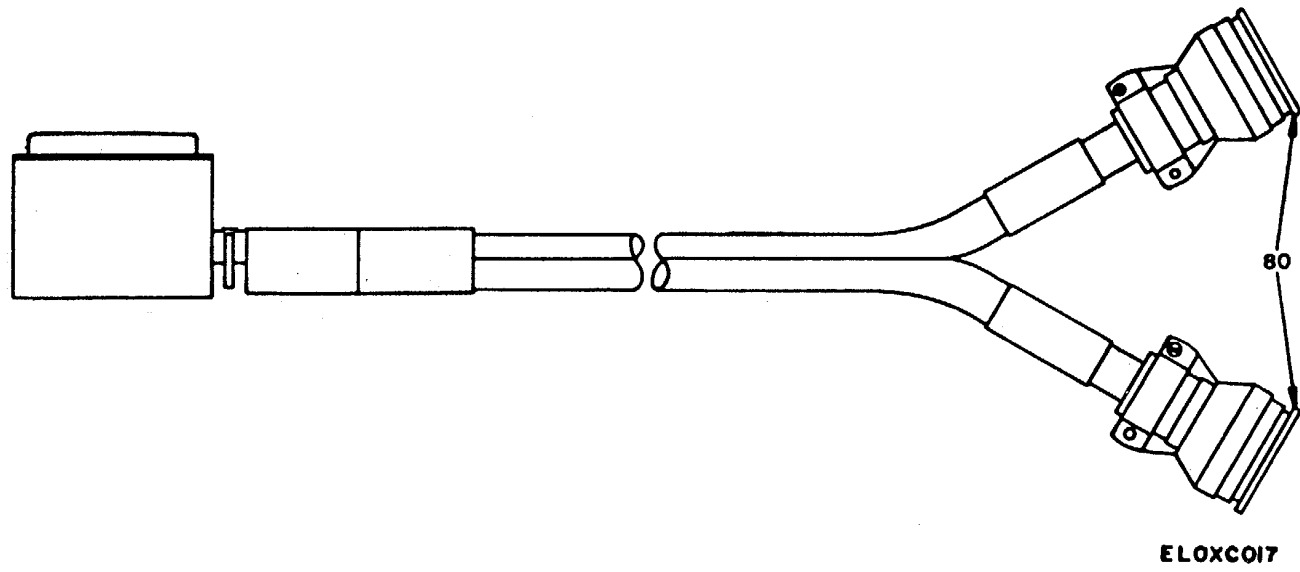


Figure 8. S-561-TTC-41 (V), Cable Assembly

SECTION II

TM 11-5805-693-20P

(1) ILLUSTRATION		(2)	(3)	(4)	(5)	(6)	(7)	(8)
(a) FIG NO.	(b) ITEM NO.	SMR CODE	NATIONAL STOCK NUMBER	PART NUMBER	FSCM	DESCRIPTION <i>USABLE ON CODE</i>	U/M	QTY INC IN UNIT
8	80	PAOZZ		MS90376-22Y	96906	CAP PROTECTIVE,DUST	EA	2

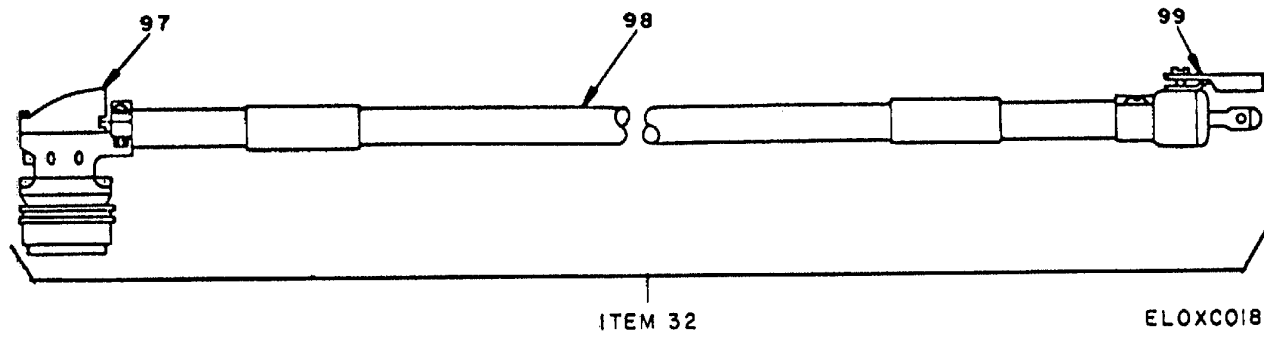
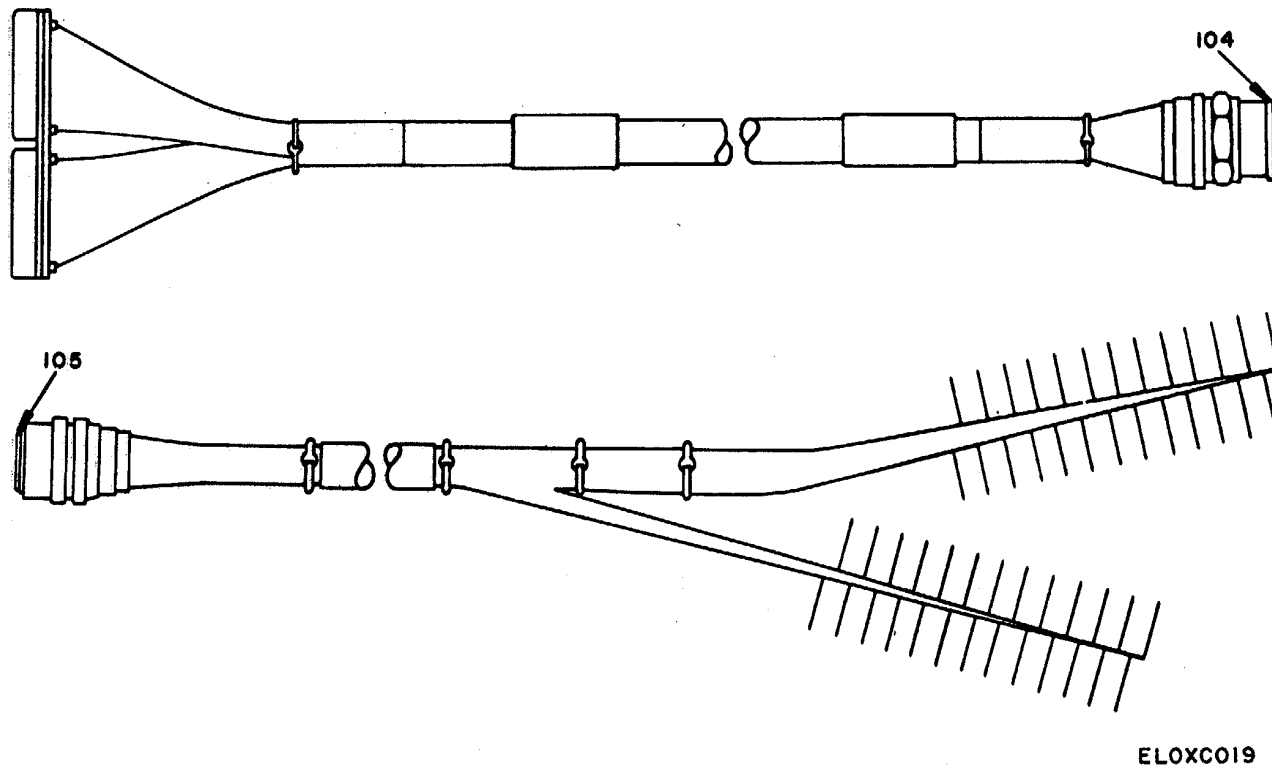


Figure 9. S-561/TTC-41 (V), Cable Assembly

SECTION II

TM 11-5805-693-20P

(1) ILLUSTRATION		(2)	(3)	(4)	(5)	(6)	(7)	(8)
(a) FIG NO.	(b) ITEM NO.	SMR CODE	NATIONAL STOCK NUMBER	PART NUMBER	FSCM	DESCRIPTION <i>USABLE ON CODE</i>	U/M	QTY INC IN UNIT
9	32	PAOZZ		SC-D-865906	80063	CABLE ASSEMBLY	EA	2



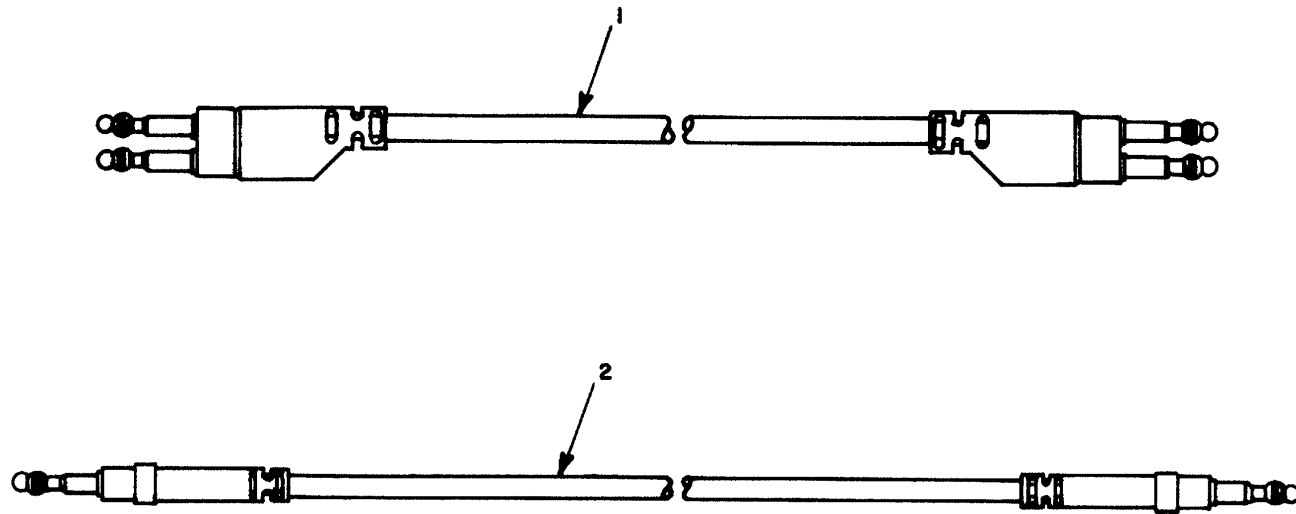
ELOXC019

Figure 10. S-561/TTC-41 (V), Cable Assemblies.

SECTION II

TM 11-5805-693-20P

(1)		(2)	(3)	(4)	(5)	(6)	(7)	(8)
ILLUSTRATION		SMR CODE	NATIONAL STOCK NUMBER	PART NUMBER	FSCM	DESCRIPTION <i>USABLE ON CODE</i>	U/M	QTY INC IN UNIT
(a) FIG NO.	(b) ITEM NO.							
10	104	PAOZZ		MS90376-24Y	96906	CAP.PROTECTIVE DUST	EA	1
10	105	PAOZZ	5340-00-213-8893	MS90376-20R	96906	COVER,ELECTRICAL CO	EA	12



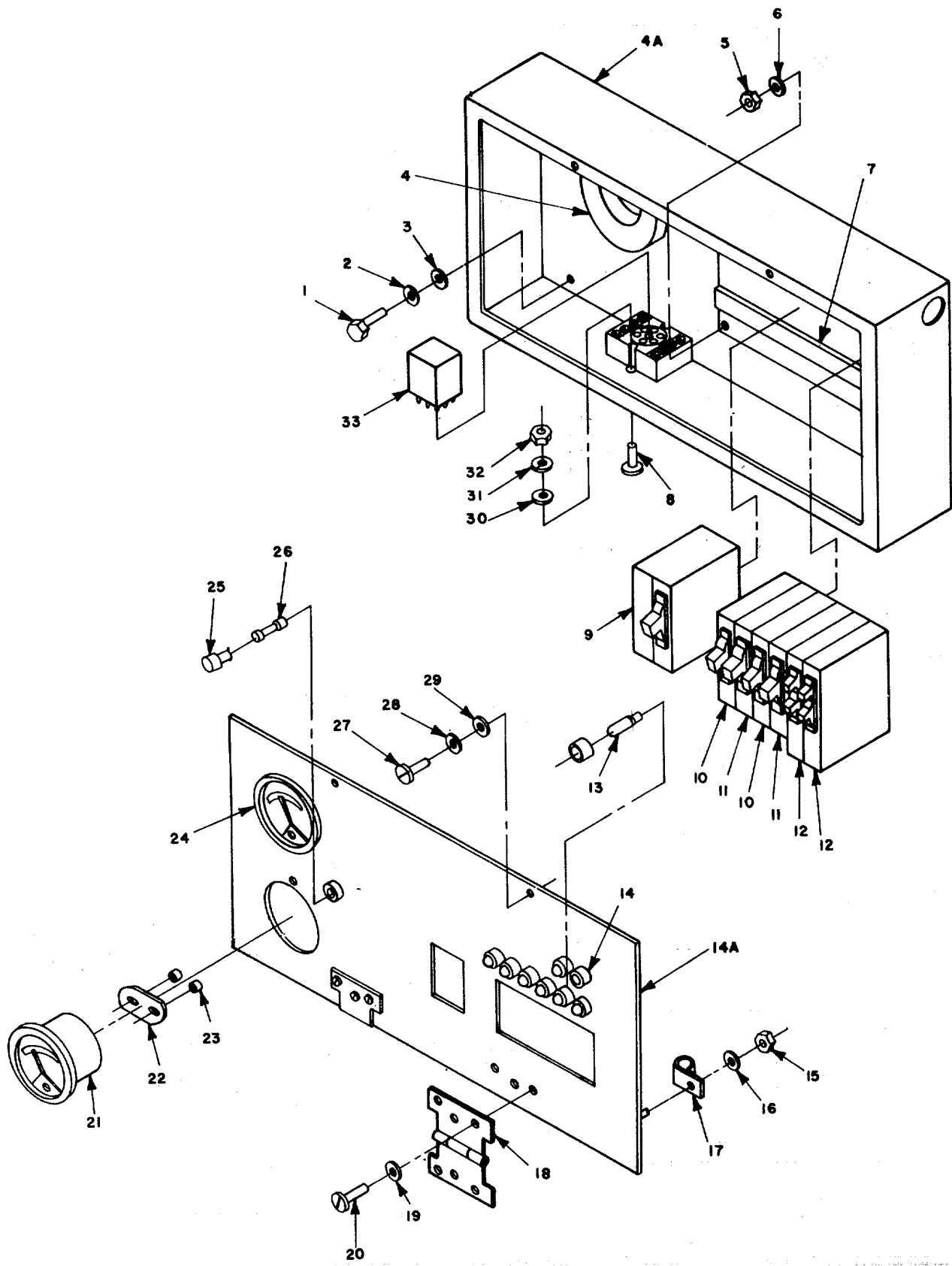
ELOXC020

Figure 11. S-561/TTC-41 (V). Patch Cords

SECTION II

TM 11-5805-693-20P

(1)		(2)	(3)	(4)	(5)	(6)	(7)	(8)
ILLUSTRATION		SMR CODE	NATIONAL STOCK NUMBER	PART NUMBER	FSCM	DESCRIPTION <i>USABLE ON CODE</i>	U/M	QTY INC IN UNIT
(a) FIG NO.	(b) ITEM NO.							
11	1	PAOZZ	5995-00-319-8886	PJ- 761	70674	CABLE ASSEMBLY,T ,	EA	8
11	1	PAOZZ	5995-00-241-7489	PJ-762	70674	PATCH CORD	EA	10
11	1	PAOZZ		PJ-763	70674	PATCH CORDS	EA	8
11	1	PAOZZ	5995-00-102-1494	PJ-764	70674	CABLE ASSEMBLY,T	EA	4
11	1	PAOZZ		PJ-765	70674	CABLE ASSEMBLY,T	EA	2
11	2	PAOZZ		PJ-711	70674	CABLE ASSEMBLY,TELE	EA	15
11	2	PAOZZ	5995-00-717-9887	PJ-712	70674	CABLE ASSEMBLY,T	EA	20
11	2	PAOZZ		PJ-713	70614	CABLE ASSEMBLY,T	EA	15
11	2	PAOZZ	5995-00-998-0924	PJ-714	70674	CABLE ASSEMBLY,T	EA	8



ELOXC014

Figure 12. Power Distribution Box.

(1) ILLUSTRATION		(2)	(3)	(4)	(5)	(6)	(7)	(8)
(a) FIG NO.	(b) ITEM NO.	SMR CODE	NATIONAL STOCK NUMBER	PART NUMBER	FSCM	DESCRIPTION <i>USABLE ON CODE</i>	U/M	QTY INC IN UNIT
						GROUP 12 POWER DISTRIBUTION BOX		
12	9	PAOZZ		SC-C-883616	80063	CIRCUIT BREAKER	EA	1
12	10	PAOZZ		SC-C-865591-2	80063	CIRCUIT BREAKER	EA	2
12	11	PAOZZ		SC-C-865591-1	80063	CIRCUIT BREAKER	EA	2
12	12	PAOZZ		SC-C-859378	80063	CIRCUIT BREAKER	EA	2
12	13	PAOZZ	6240-00-682-3411	NE51H	08806	LAMP,LOW	EA	8
12	26	PAOZZ	5920-00-280-8342	F02A250V1A	81349	FUSE,CARTRIDGE	EA	1

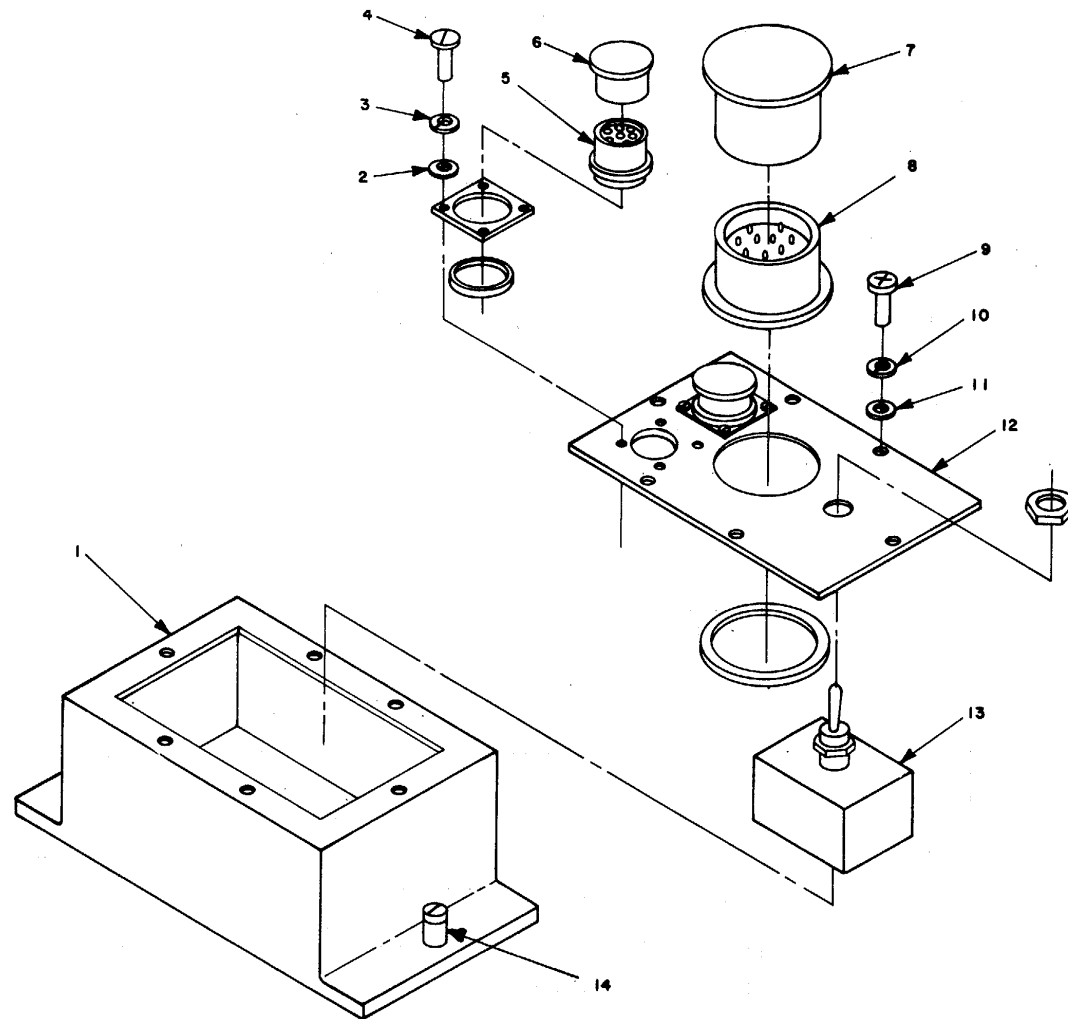


Figure 13. Headset Switch Box.

SECTION II

TM 11-5805-693-20P

(1)		(2)	(3)	(4)	(5)	(6)	(7)	(8)
ILLUSTRATION		SMR CODE	NATIONAL STOCK NUMBER	PART NUMBER	FSCM	DESCRIPTION <i>USABLE ON CODE</i>	U/M	QTY INC IN UNIT
(a) FIG NO.	(b) ITEM NO.							
13	6	PAOZZ	5340-00-481-8934	MS90376-14Y	96906	GROUP 15 HEADSET SWITCH BOX CAP,PROTECTIVE,D.....	EA	2
13	7	PAOZZ	5340-00-200-5904	MS90376-16R	96906	CAP,PROTECTIVE,D	EA	1

NOTE: LATEST NATIONAL STOCK NUMBER AND PART NUMBER ASSIGNMENT IS INCLUDED AT END OF INDEX

STOCK NUMBER	FIGURE NO.	ITEM NO.	STOCK NUMBER	FIGURE NO.	ITEM NO.
5120-00-060-2004	2	119	7105-00-269-8463	2	71
5995-00-102-1494	11	1	4210-00-270-4512	2	74
5110-00-115-5049	2	116	5920-00-280-8342	6	1
6130-00-133-5879	1	6	5920-00-280-8342	12	26
6140-00-134-0850	1	7	5995-00-319-8886	11	1
6140-00-134-0850	1	7	7920-00-342-4521	2	82
5805-00-134-2599	1	13	6645-00-410-2395	2	123
6240-00-152-2996	2	135	5340-00-481-8934	13	6
6240-00-152-2996	5	20	5805-00-543-0012	1	11
6240-00-155-8653	3	12	6240-00-635-9753	2	3
6240-00-155-8726	4	12	6240-00-682-3411	12	13
7520-00-159-4863	2	102	5995-00-717-9887	11	2
			6230-00-729-9614	2	58
6250-00-194-4794	2	128	2540-00-846-8483	2	143
6250-00-194-4794	5	23	5120-00-900-6096	2	16
5340-00-200-5904	13	7	4120-00-935-1608	2	150A
5340-00-213-8893	10	105	5995-00-998-0924	11	2
5120-00-222-8852	2	120	5830-01-008-3126	1	12
5975-00-224-5260	2	117	8505-01-032-1694	1	3
5995-00-241-7489	11	1			

PART NUMBER	FSCM	FIG. NO.	ITEM NO.	NUMBER	PARTFSCM	FIG. NO.	ITEM NO.
BB501/U	80058	1	7	SC-C-539894-3	80063	2	119
BB501/U	80058	1	7	SC-C-859378	80063	12	12
CV6-1-15-60	06534	2	150A	SC-C-865591-1	80063	12	11
F02A250V1A	81349	6	1	SC-C-865591-2	80063	12	10
F02A250V1A	81349	12	26	SC-C-865686	80063	7	44
H-182/PT	80058	1	8	SC-C-883616	80063	12	9
LS-147F/F1	80058	1	12	SC-D-115721	80063	2	144
MS15548-1	96906	3	12	SC-C-14158	80063	2	117
MS15584-8	96906	4	12	SC-D-147189	80063	2	143
MS90376-14Y	96906	13	6	SC-D-865568	80063	2	127
MS90376-16R	96906	13	7	SC-D-865906	80063	9	32
MS90376-20R	96906	10	105	SCB539504	80063	2	128
MS90376-22Y	96906	8	80	SCB539504	80063	5	23
MS90376-24Y	96906	10	104	SCC539451	80063	2	116
M15098/3-002	81349	2	3	SCC539469	80063	2	82
NE51H	08806	12	13	SCC536475	80063	2	123
PJ-711	70674	11	2	SCC539491	80063	2	58
PJ-712	70674	11	2	SCC539495	80063	2	135
PJ-713	70674	11	2	SCC539495	80063	5	20
PJ-714	70674	11	2				
PJ-761	70674	11	1	SCC539505	80063	2	16
PJ-762	70674	11	1	SCC539526	80063	2	103
PJ-763	70674	11	1	SCDL115724	80063	2	145
PJ-764	70674	11	1	SCD539454	80063	2	102
PJ-765	70674	11	1	SCD539471	80063	2	71
PP6224/U	80058	1	6	SCD539482	80063	2	74
RD435U	80058	2	147	SCD539483	80063	2	88
SB-3614(V)/TT	80058	1	3	TA312/PT	80058	1	11
SC-B-539644	80063	2	37	TA938/G	80058	1	13
SC-C-539502-4	80063	2	120				

LATEST NATIONAL STOCK NUMBER ASSIGNMENT

STOCK NUMBER	FIG. NO.	ITEM NO.
7520-00-162-6178	2	43

LATEST PART NUMBER ASSIGNMENT

PART NUMBER	FSCM	FIG. NO.	ITEM NO.
SCC539503	80063	2	43

By Order of the Secretary of the Army:

BERNARD W. ROGERS
General, United States Army
Chief of Staff

Official:

J.C. PENNINGTON
Major General, United States Army
The Adjutant General

DISTRIBUTION:

Active Army:


HISA (Ft Monmouth) (26)	USAICS (3)
USAINSCOM (2)	MAAG (1)
COE (1)	USARMIS (1)
TSG (1)	USAERDAA (1)
USAARENBD (1)	USAERDAW (1)
DARCOM (1)	Ft Gordon (10)
TRADOC (2)	Ft Huachuca (10)
OS Maj Comd (4)	Ft Carson (5)
TECOM (2)	Ft Gillem (10)
USACC (4)	Ft Richardson (CERCOM Ofc)(2)
MDW (1)	Army Dep (1) except
Armies (2)	LBAD (14)
Corps (2)	SAAD (30)
Svc Colleges (1)	TOAD (14)
USASIGS (5)	SHAD (3)
USAADS (2)	USA Dep (1)
USAFAS (2)	Sig Sec USA Dep (1)
USAARMS (2)	Units org under fol TOE:
USAIS (2)	29-207 (2)
USAES (2)	29-610 (2)

NG: None

USAR: None

For explanation of abbreviations used, see AR 310-50.

RECOMMENDED CHANGES TO EQUIPMENT TECHNICAL PUBLICATIONS

 <p style="text-align: center;">SOMETHING WRONG WITH PUBLICATION</p>				FROM: (PRINT YOUR UNIT'S COMPLETE ADDRESS)
<p style="text-align: center;"><i>THEN...JOT DOWN THE DOPE ABOUT IT ON THIS FORM. CAREFULLY TEAR IT OUT, FOLD IT AND DROP IT IN THE MAIL.</i></p>				DATE SENT
PUBLICATION NUMBER		PUBLICATION DATE	PUBLICATION TITLE	
BE EXACT PIN-POINT WHERE IT IS				IN THIS SPACE, TELL WHAT IS WRONG AND WHAT SHOULD BE DONE ABOUT IT.
PAGE NO.	PARA-GRAPH	FIGURE NO.	TABLE NO.	
PRINTED NAME, GRADE OR TITLE AND TELEPHONE NUMBER			SIGN HERE	

